

WHAT IS COMMUNITY SERVICES?

Roles in Community Services involve helping other people and making a difference to their life. This industry offers a wide range of roles in: Disability, Aged Care, Leisure & Health, Education, Mental Health, Social Work, Youth Work & Children's Education & Care.



WHY WORK IN COMMUNITY SERVICES?

VALUE & PURPOSE DRIVEN

Operating with respect to provide support and encourage people to live their best lives.

Work Experience, Volunteering, Employment, Casual Employment, University, TAFE, Traineeships.

PATHWAYS

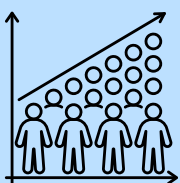
THE CHARACTERISTICS OF A HIGH-QUALITY COMMUNITY SERVICE WORKER

- Empathy
- Caring & Compassionate
- Diligent
- Safe & Timely Care
- Building Relationships
- Patience
- Flexible Hours

TECHNOLOGY BASED SKILLS

Do you love IT?

See how your skills can contribute towards assisting Community Services providers with assistive technology or undertaking a job (research, documentation, recording and reporting). Roles in IT are also needed to maintain connection and communication for those you support (facilitating family connections via social media for example).



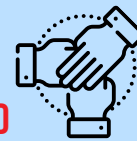
BY 2025
1 IN 5
NEW JOBS

will be in healthcare and social assistance, specifically aged and disabled carers



7,800

job vacancies
(month to July 2022)



VARIED
TRAINING &
SKILLING

opportunities available



WORK
& EARN

while you study

DID YOU KNOW?

STUDIES SHOW THAT WORKERS IN THE COMMUNITY SERVICES SECTOR EXPERIENCE HIGHER LEVELS OF JOB SATISFACTION THAN IN OTHER INDUSTRIES.

School students

You can study a VET pathway (Vocational Education Training) while at school to gain a qualification, knowledge, work experience and skills in the Community Services sector. Please see your VET Teacher, Industry Liaison Officer or Careers Counsellor at school to start working towards your career pathway in Community Services while at school.

Parents & carers

Are you supporting a young person to make career decisions? Skills Road (www.skillsroad.com.au) may contain some useful tips and information to guide the process. Take the Career Quiz to research aligned careers.

School leavers

Your transition from school to academic and further education pathways may include Certificate IV, Diploma, Advanced Diploma, or Bachelor's Degree in your chosen field through various Universities and Registered Training Organisations. Certificate III is the most common entry level qualification, and many roles will require you to be willing to obtain this if you haven't already.

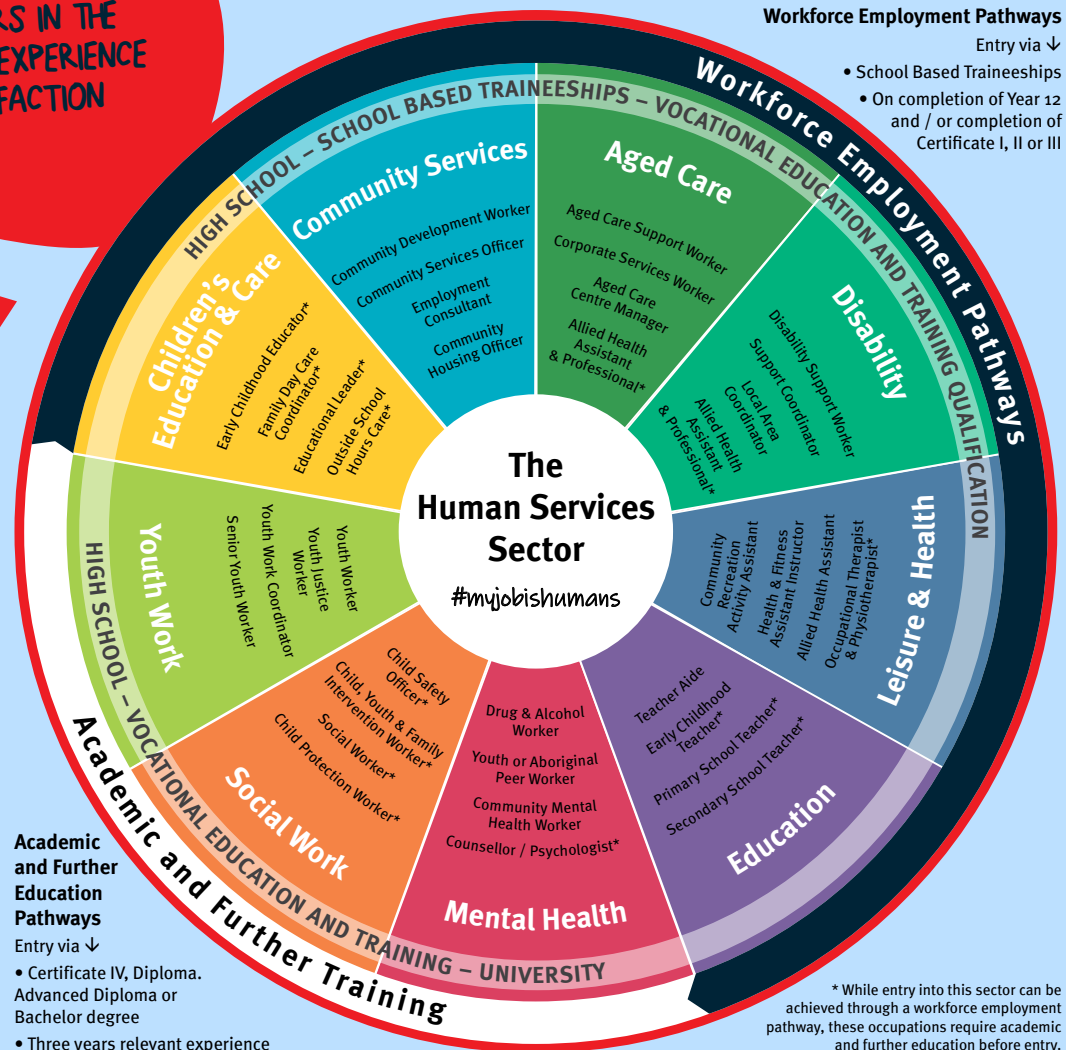
Entering the workforce

Entering the workforce can look different for everyone. If you are currently working through a certificate, you can find 'Entry Level Roles' into industry to begin your career in your chosen field. You can even work part time in the industry while you undertake further education or training.

Workforce Employment Pathways

Entry via ↓

- School Based Traineeships
- On completion of Year 12 and / or completion of Certificate I, II or III



Explore careers, training pathways opportunities through the following websites

- ✓ Register for job opportunities here
www.csialtd.com.au/job-match
- ✓ Use the following data explorer to look at your region and specific sectors in detail
www.jobsqueensland.qld.gov.au/anticipating-future-skills/data-explorer
- ✓ Harness your skills
www.yourcareer.gov.au/articles/bring-your-thing-to-aged-care



Choose Your Own Health Career within Community Services
www.cyohealthcareer.com.au



Queensland Skills Gateway
www.skillsgateway.training.qld.gov.au



Jobs and Skills
www.jobsandskills.gov.au



Care Careers
www.carecareers.com.au



Subsidised Training and Incentives
www.desbt.qld.gov.au/training/training-careers/incentives



← SCAN HERE TO LEARN MORE ABOUT COMMUNITY SERVICES

www.communitygatewayschools.org.au